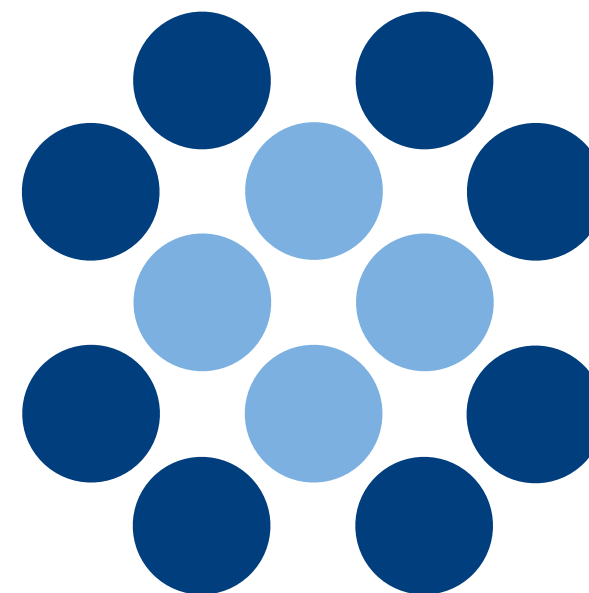
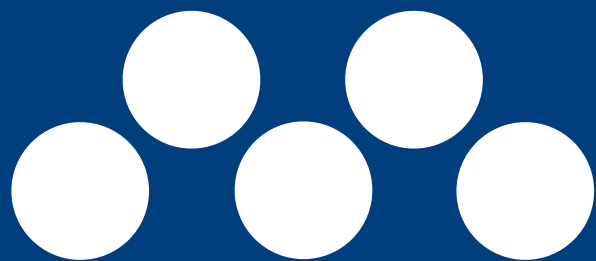
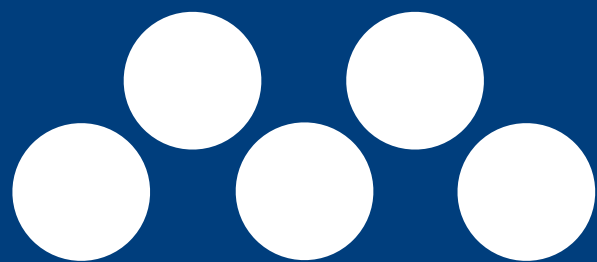




CONTARINA
SPA **1989-2019**



CONTARINA
SPA



**30 doesn't simply indicate
the number of years
or a goal for us:
It means much more**

This number says something about the company and the building of a system of shared values and projects developed in unison with the municipal authorities and citizens bearing in mind at all times the objective of implementing practical sustainable policies. An identity which today represents a means to look at the transformations of the future.

**30 ANNI
PER L'AMBIENTE**

For all those who believe that it is possible to set important targets for the development of an eco-friendly environmental culture capable of enhancing each individual territory thanks to transparency, participation and accountability.

alities, share their
challenging targets and implement
strategies and operational plans to

49

ABOUT US

We are a 100% public company operating in the province of Treviso. We offer services to the citizens living in the 49 municipalities belonging to the Consiglio di Bacino Priula.



We work together with the municipalities, share their choices and challenging targets and implement

strategies and operational plans to ensure a high quality of life and to protect the environment in which we live.

The services we offer are many and they arise from the constant collaboration with the territory. The relationship with

our stakeholders has become consolidated over the years and is now the key element guiding our actions.



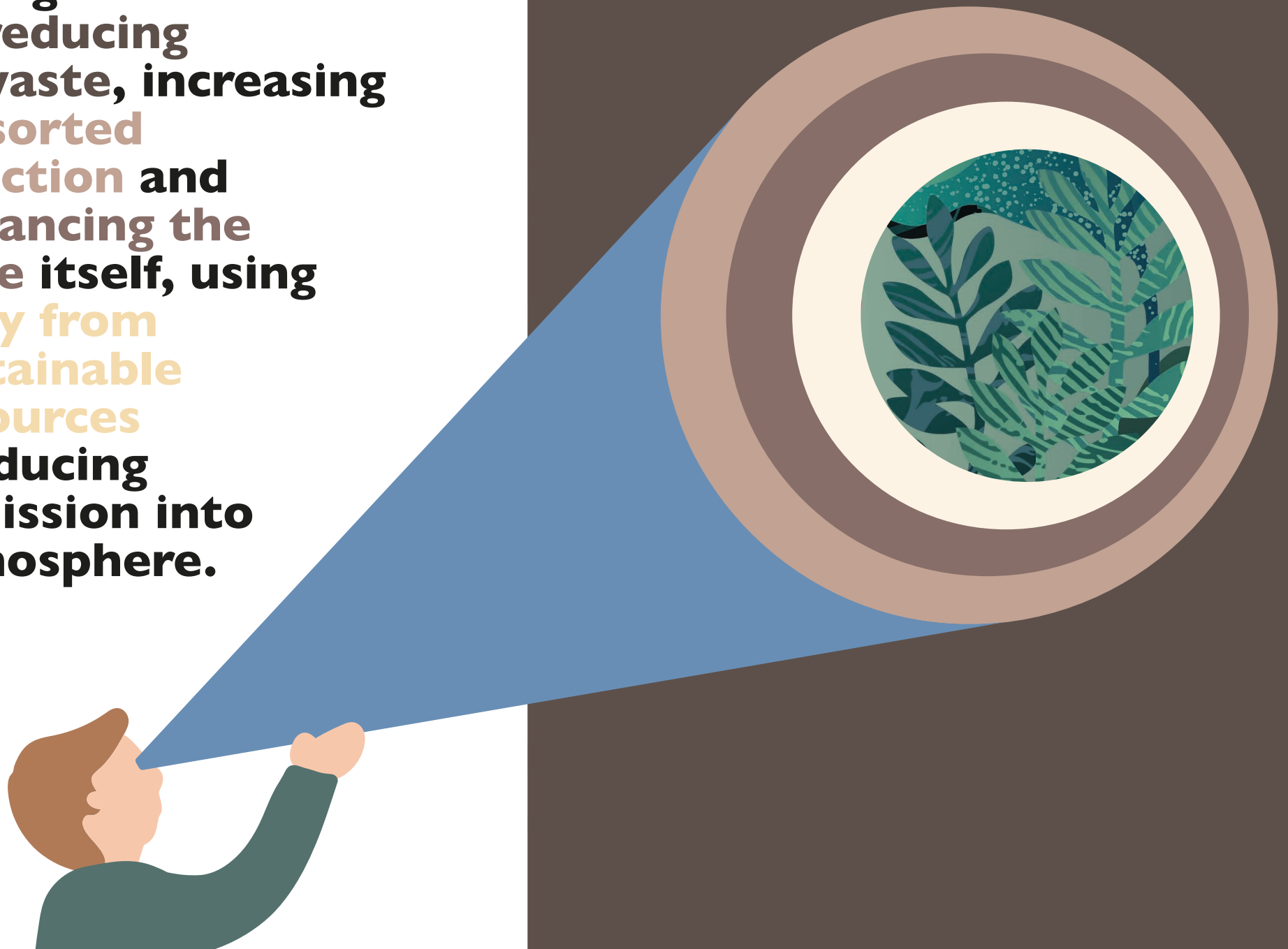
We deal with the integrated management of waste from its collection to its treatment ensuring that the different materials are valued and recycled. Thanks to the results obtained from the sorting of waste we obtain secondary raw materials that can be used in other production cycles thus eliminating the need to use natural resources.

The over 700 people employed are essential for us and they carry out their daily work in a professional and conscientious way. Thanks to their team work it is possible to implement the company strategies and ensure efficient and reliable services.



**Day in day out
we focus on achieving
better results,
preventing
and reducing
residual waste, increasing
the sorted
collection and
enhancing the
waste itself, using
energy from
sustainable
sources
and reducing
emission into
the atmosphere.**

THE PHILOSOPHY



to increase the percentage
of sorted waste collected

96,7%

and reducing
residual waste, increase
**the sorted
collection and
enhancing the
waste itself, using
energy from
sustainable
sources
and reducing
emission into
atmosphere.**



10 Kg

to limit the yearly quantity
of residual waste produced
per person

... waste, including
**the sorted
collection and
enhancing the
waste itself, using
energy from
sustainable
sources
and reducing
emission into
atmosphere**

to increase the yearly
production of quality compost



26.800 t

are sorted
collection and
enhancing the
waste itself, usi
energy from
sustainable
sources
and reducing
mission

2.000.000
kWh



to produce “green” energy thanks to
the photovoltaic panels installed
on the roofs of our buildings

*We look to the future with confidence
to pass on a better environment
to the next generations.*

Collection
enhancing
waste itself,
energy from
sustainable
sources
reducin



**Over the years
we have grown
while supporting
with conviction
and tenacity
the “green
economy”
principles,
through
a circular
economy
model
seeking
to limit economic,
environmental
and social
impacts.**



The economy of the future can be understood using the metaphor of the astronaut which highlights that outer space is not a resource one can easily access and the spaceship is a closed ecosystem with limited resources available. The same is true of the Earth for mankind.

The astronaut only has the spaceship and its control depends on his ability to manage the processes and phenomena occurring within it.

**“green
economy”
principles,
through
a circular
economy
model**

The circular economy represents a resource management model which recreates itself. It is an economic system designed to reuse the materials coming from other production cycles and reduce residual waste as much as possible.



“green economy” principles, through a circular economy model

The circular economy represents a resource management model which recreates itself. It is an economic system designed to reuse the materials coming from other production cycles and reduce residual waste as much as possible.



Recycling but also recovery, reuse and creation of industrial models emphasizing ecodesign are fundamental to increase the circularity of the production system based on an approach fostering the reduction in the use of raw materials.

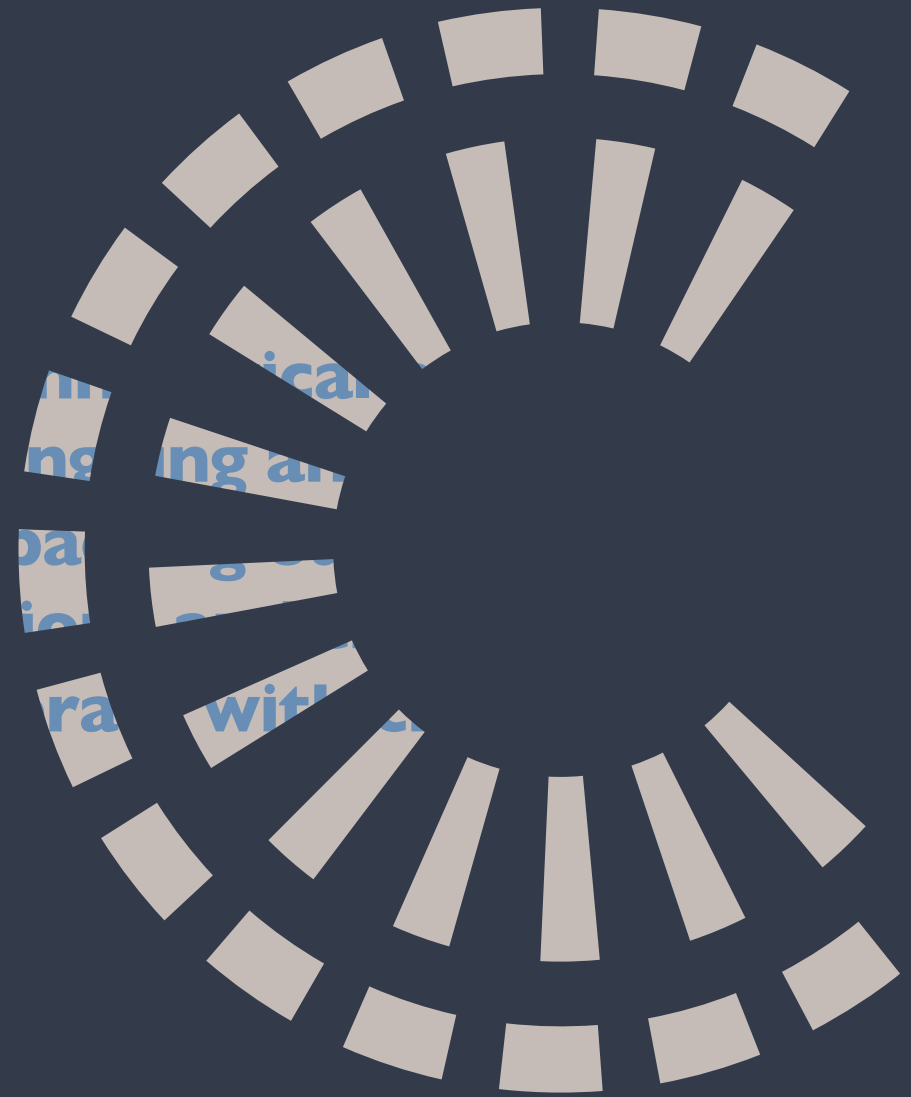


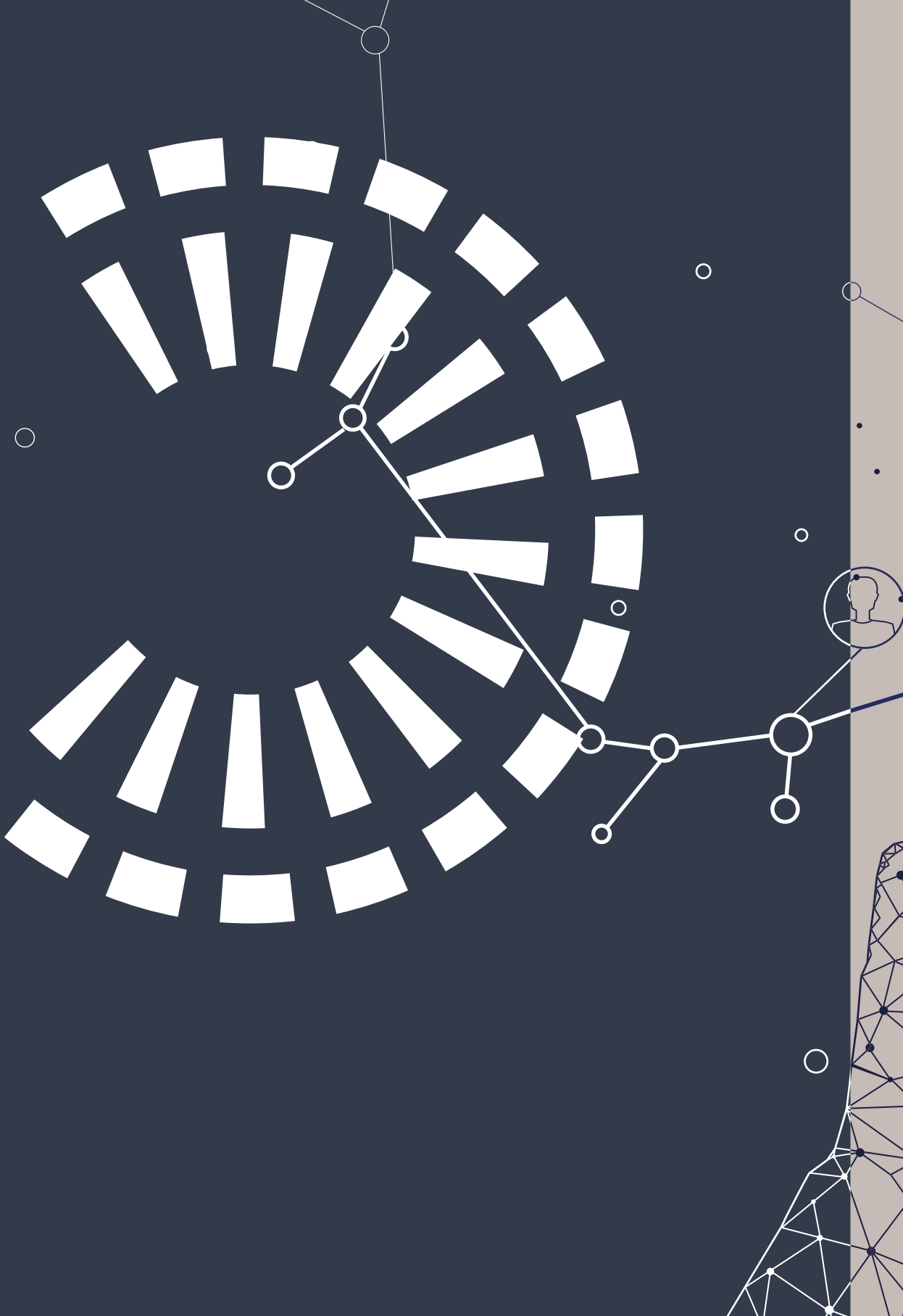
We look to the future
with the same attention paid by the astronaut...
indeed, planet Earth is not that different
from a spaceship in outer space!



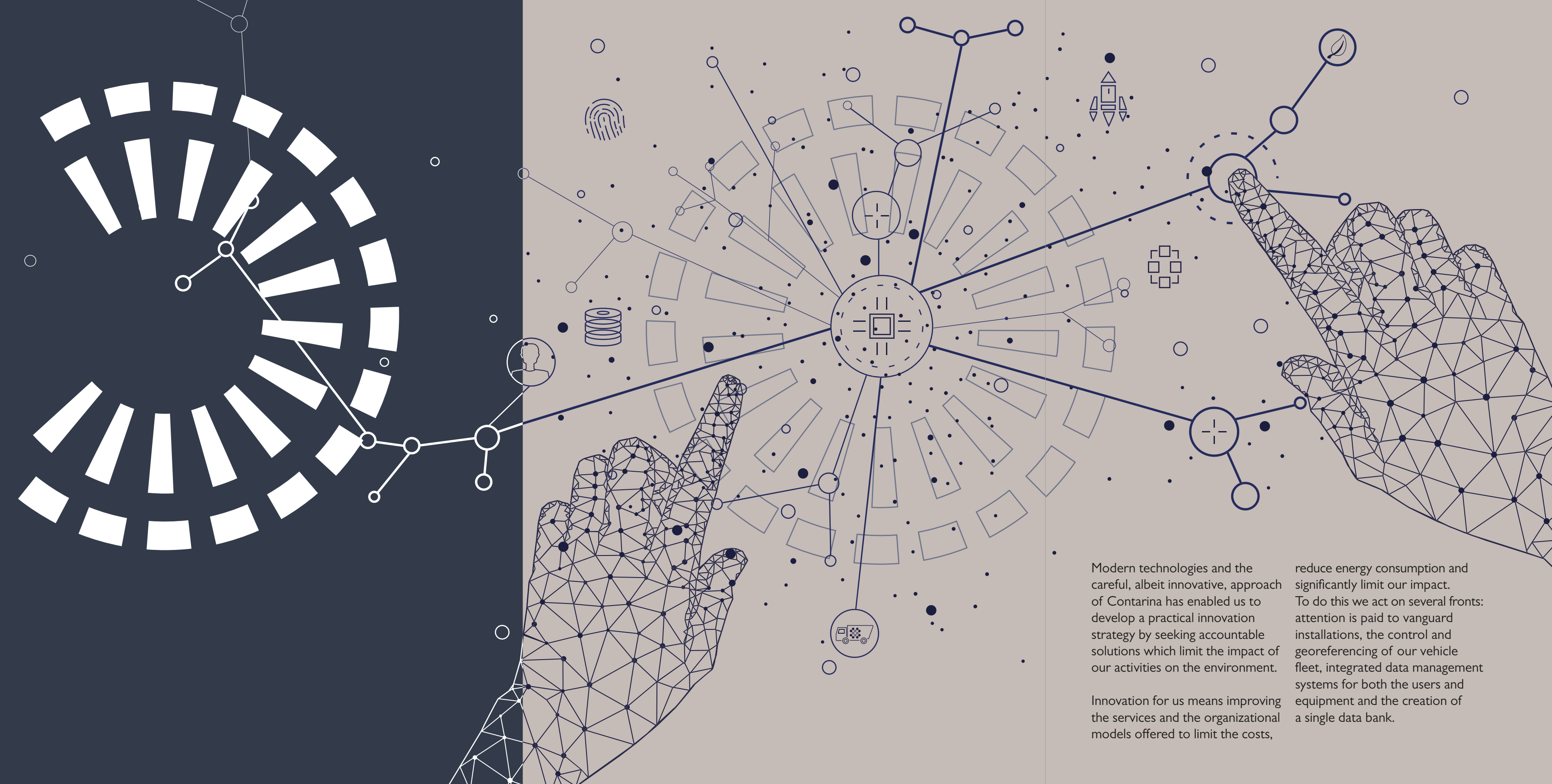


TECHNOLOGICAL EVOLUTION





Technological progress is ongoing and it is radically impacting our daily habits, actions and the way we interact with each other.



Modern technologies and the careful, albeit innovative, approach of Contarina has enabled us to develop a practical innovation strategy by seeking accountable solutions which limit the impact of our activities on the environment.

Innovation for us means improving the services and the organizational models offered to limit the costs,

reduce energy consumption and significantly limit our impact. To do this we act on several fronts: attention is paid to vanguard installations, the control and georeferencing of our vehicle fleet, integrated data management systems for both the users and equipment and the creation of a single data bank.

INVESTMENTS



Over the years the company has acquired an industrial dimension. It now operates on many fronts and implements ever more services to citizens and their municipalities.

Its economic-financial viability and credit rating are certified by Credit Passport®, the most comprehensive credit risk rating system attesting the capacity of carrying out one's activity while simultaneously complying with all the financial obligations envisaged.

This explains why we are a driver of the local economy – also thanks to the collaboration with cooperatives and social networks operating in the territory – generating an economic volume of more than 80 million euros.

... methane production
... which shall use the
organic ... collected
and ... al fuel ...

CO₂
PM10
SO₂

60%

We plan to reconvert 60% of our vehicle fleet thanks to the construction of a biomethane production plant which will use the collected organic waste and an internal fueling facility thus reducing air pollution and the subsequent health risks.

CO₂
PM10
SO₂

60%

We plan to reconvert 60% of our vehicle fleet thanks to the construction of a biomethane production plant which will use the collected organic waste and an internal fueling facility thus reducing air pollution and the subsequent health risks.


CO₂
PM10
SO₂



-23,6%
carbon dioxide

= -90%
particulate matter

-98,8%
sulphur dioxide



We plan our investments bearing in mind the objective of continuing to offer new and better services, foster the implementation of new technologies and operational modes and manage waste through the innovation of our plants and vehicle fleet.

All our investments are characterised by sustainability and accountability. We seek to create value in terms of economic viability in the medium-to-long term and ensure positive and measurable social and environmental impacts.

CO₂
PM10
SO₂

THE NETWORK

The graphic features several thick, dark blue lines that intersect and branch out, creating a network-like structure. The lines are set against a background that is split vertically: the left side is white, and the right side is a muted green. The lines themselves cross the vertical boundary, connecting the two color fields.

**Over the years we
have built professional
relationships with
organisations and
businesses having
strong company values.**

Indeed, the ideas and experiences stemming from mutual exchanges and trust with other institutions and the leading market players have led us to become the protagonists of operational networks at a local, national and indeed international level.

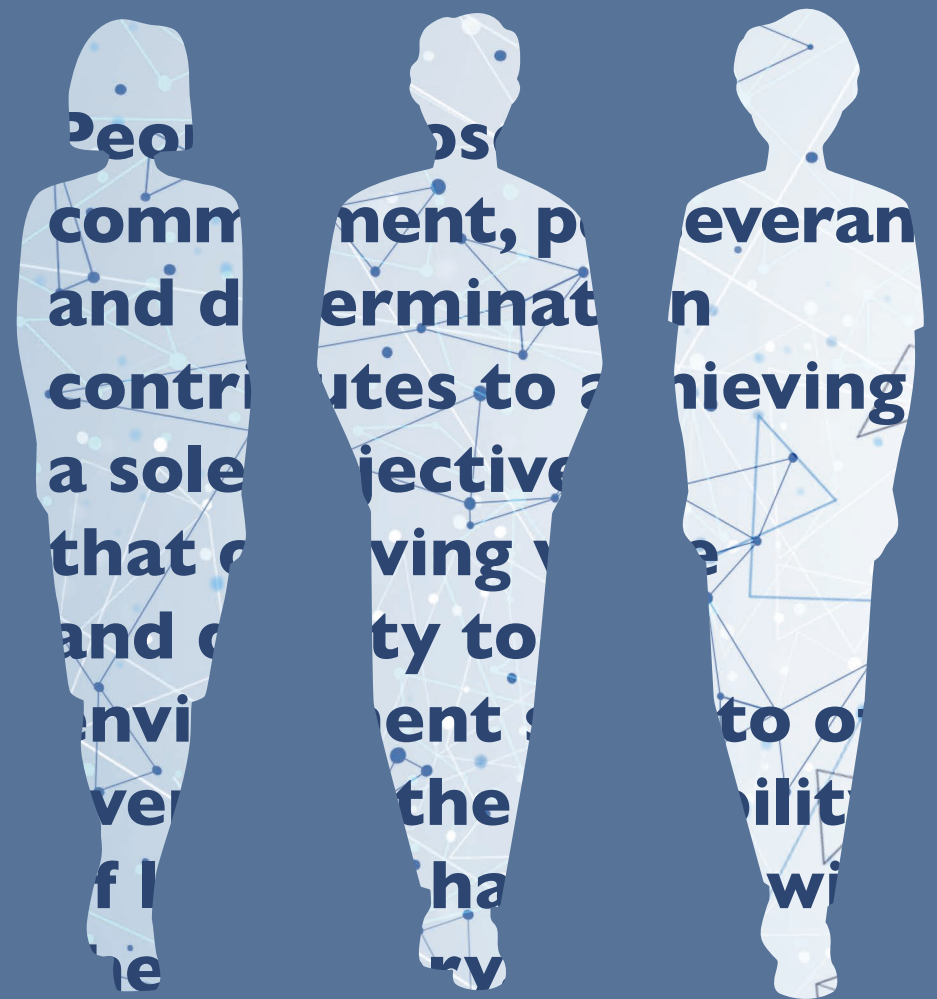
Our activities have created a lot of interest and we have been asked to become part of and manage important partnerships in which our identity and founding principles constitute an added value in each and every new collaboration.

To generate identity, common values and goals and produce innovation a business must be based on an open system of relationships. It is indeed impossible to grow in

an autonomous and independent manner. Growth is possible only within a network where one can intercept the opportunities and challenges which arise.

THE FUTURE

**We were founded
30 years ago and our
history has been written
by many people: citizens,
public administrators
and employees.**





...e were founded
...year ... and
...tory ... been ... ten
...mar ... ple: ... ns
...lic ... ist
...e ... es

People whose daily commitment, perseverance and determination contributes to achieving a sole objective: that of giving value and quality to the environment so as to offer everyone the possibility of living in harmony with the territory.





We were founded
year ago and
tory has been ten
manipulation
lic distribution
e



**This is what we have
done up to now and what
we will continue to do.**

FAVINI

This volume has been made possible thanks to the support and contribution of FAVINI.

The types of paper that have been selected and used are the result of the FAVINI research and know-how and they fully embody the spirit of this project as well as the identity and history of Contarina.

Shiro Alga Carta, Crush, Remake and Refit are special papers. They are recyclable and have a low environmental impact. They are the result of an **up-cycling** process, a process which goes beyond recycling and generates an **added value** through the creative reuse of discards coming from other production chains.

SHIRO ALGA CARTA

made with the damaging algal blooms from fragile marine areas

CRUSH

made with the byproducts of agri-industrial manufacturing process

REMAKE

born from the upcycling process of leather residues

REFIT

born from the waste product from wool and cotton textile manufacturing processes



CONCEPT AND
GRAPHIC PROJECT
Comunicazione Contarina Spa

TEXTS
Comunicazione Contarina Spa

PUBLISHED IN
Ottobre 2019

PRINTED
FOR
Contarina Spa

BY
Graficart Arti Grafiche Srl
via Boscalto, 27 - Resana TV
graficart.it

All rights reserved. Total and/or partial reproduction without a written authorization is strictly forbidden.
Copyright © 2019

All the paper and ink used for this volume come from environmentally sustainable sources.



A special thanks to Graficart who made its knowledge and proficiency available in printing and paper converting setting.

GRAFICART
ARTI GRAFICHE

